

# STATEMENT OF ACTIVITIES

Years Ended June 30, 2023 and 2022  
Amounts in 000's

	2023	2022
<b>OPERATING REVENUE</b>		
Government Grants	99,243	79,321
Program Service Fees	11,146	8,273
Contributions	11,760	11,518
United Way	1,382	1,403
Endowment Payout	1,668	1,668
Income from Trusts & Other Income	3,959	4,724
<b>TOTAL OPERATING REVENUE</b>	<b>129,158</b>	<b>106,907</b>

## OPERATING EXPENSES

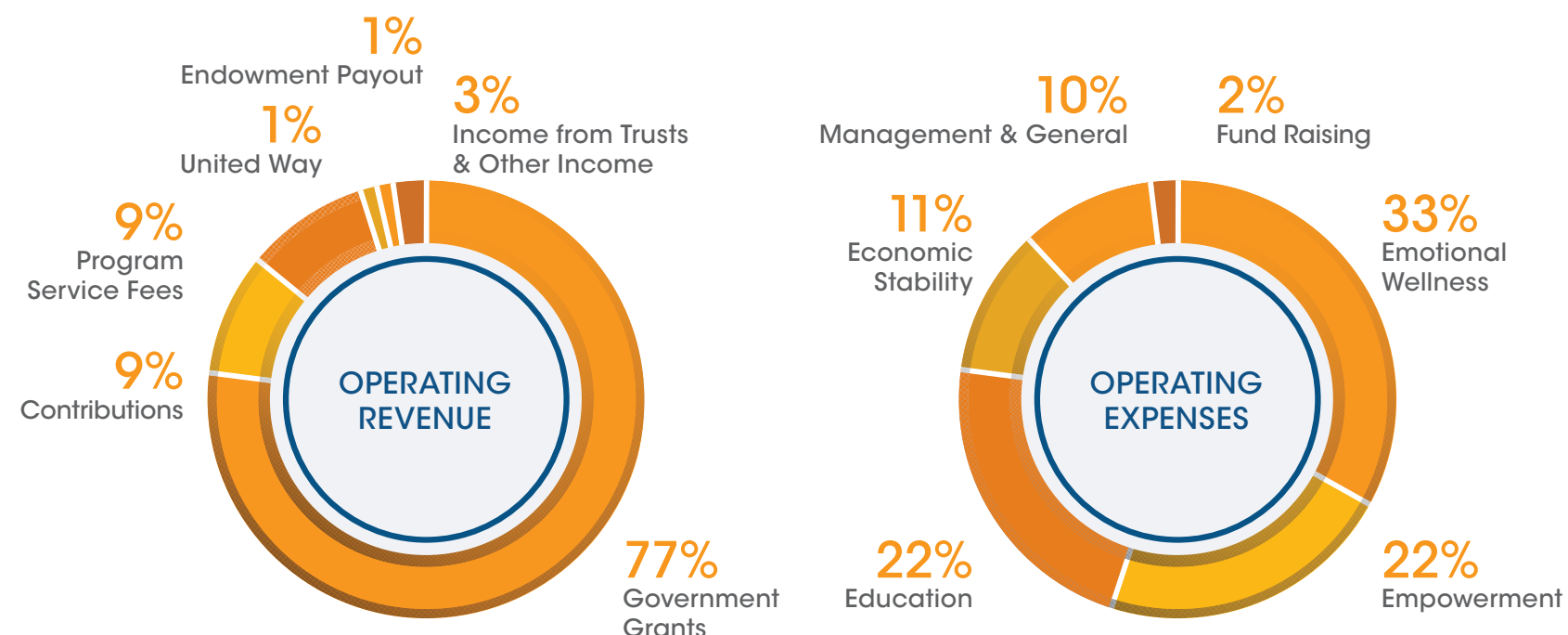
	2023	2022
<b>PROGRAM EXPENSES</b>		
Emotional Wellness	42,694	30,599
Empowerment	28,195	27,301
Education	27,500	23,910
Economic Stability	14,556	12,744
Total Program Expenses	112,945	94,554
Management & General	13,131	10,461
Fund Raising	2,724	2,398
<b>TOTAL OPERATING EXPENSES</b>	<b>128,800</b>	<b>107,413</b>
<b>OPERATING SURPLUS (DEFICIT)</b>	<b>358</b>	<b>(506)</b>

## OTHER CHANGES IN NET ASSETS

	2023	2022
Depreciation & Amortization	(1,218)	(1,057)
Net Investment Gains (Losses)	2,663	(9,562)
Change in Pension Liability	594	(213)
Change in Market Value of Interest Rate Swap	778	1,530
PPP Loan	0	9,670
Inherent Contribution of HACC	3,279	0
Inherent Contribution of I-Grow	0	2,988
Transfer of Assets of I-Grow	(2,868)	0
Capital Grants	2,783	2,452
Release of Restriction	1,243	(797)
<b>NON OPERATING ACTIVITY</b>	<b>7,254</b>	<b>5,011</b>
<b>TOTAL CHANGE IN NET ASSETS</b>	<b>7,612</b>	<b>4,505</b>
<b>NET ASSETS AT BEGINNING OF YEAR</b>	<b>78,407</b>	<b>73,902</b>
<b>NET ASSETS AT END OF YEAR</b>	<b>86,019</b>	<b>78,407</b>
Contribution for Goods and Services	4,236	3,245

# BREAKDOWN OF EXPENSES

FY23



# STATEMENT OF FINANCIAL POSITION

June 30, 2023 and 2022  
Amounts in 000's

## ASSETS

	2023	2022
Cash	15,324	12,220
Receivables	28,247	20,758
I-Grow assets	0	2,988
Investments	44,259	42,253
Interest in trusts	17,231	16,656
Property and equipment	31,690	22,477
Construction work in Progress	0	3,494
Lease ROU Asset	10,325	
Other	1,448	1,072
<b>TOTAL ASSETS</b>	<b>148,524</b>	<b>121,918</b>

## LIABILITIES AND NET ASSETS

	2023	2022
Accounts payable and accruals	13,147	11,218
Investment Bond	8,500	2,500
NMTC Notes	10,368	10,317
Bonds payable	12,700	12,700
Pension liability	(49)	544
Lease Liability	10,541	
Other	7,298	6,232
<b>TOTAL LIABILITIES</b>	<b>62,505</b>	<b>43,511</b>
<b>NET ASSETS</b>	<b>86,019</b>	<b>78,407</b>
<b>TOTAL LIABILITIES AND NET ASSETS</b>	<b>148,524</b>	<b>121,918</b>